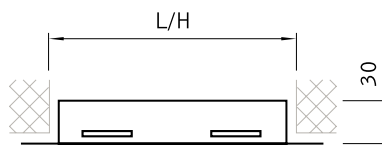
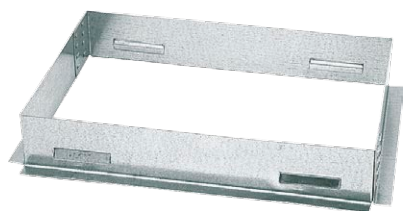


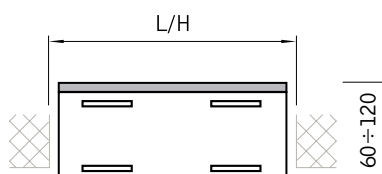
## Fitting elements for air grilles

### Fitting frame RM



Used for the press-in fitting feature, without visible screws. Purposed to fitting in walls and ducts. Frame made of bent galvanized steel sheet. Springing inserts provide stability of the grille in the frame.

### Fitting frame with a filtering insert RMF



Used in air conditioning systems and ventilation in case of single stage air cleaning, in painting chambers and as preliminary and circulation filters in rooms with low air cleanliness demands. Frame used for all sizes and types of air grilles. Element made of galvanized steel sheet. Filter made of synthetic fibre of progressive structure, hardened mechanically, with heat or with binding agents.

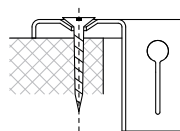
#### Filtration inserts characteristics

Filtration class with accordance to EN 779:2002	G3	G4	G4	G5
type	32130	93180	94270	95590
basis weight (g/m <sup>2</sup> )	130	250	380	600
thickness (mm)	10-12	16-19	22-24	21-23
Average filtration efficiency (%)	89	91	92	97
Initial pressure drop (Pa)	31	54	70	46
Recommended final pressure drop	250	250	900	450
Dust holding capacity (g/m <sup>2</sup> )	114	188	691	278
Permeability (m <sup>3</sup> /m <sup>2</sup> /h)	2009	2009	2009	900
Regeneratable fibre mat yes yes no	yes	yes	yes	no
Maximum working temperature (°C)	100	100	100	100

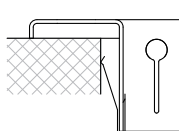
Flammability according to DIN 53438 – F1 class – slow burning.

### Grille mount types

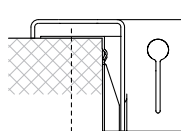
**Standard**  
Screw mount



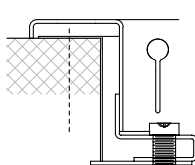
**B1** – A mount only with spring clips



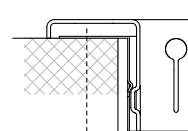
**B2** – Snap mount in fitting frame, do not use for roof mounting



**B3** – Locking mount for roof mounting



**B4** – Push mount for steel grilles



**B5** – Snap mount in fitting frame for grilles with blades

