

**Use:**

Air supply or exhaust in low and medium pressure systems Recommended for sanitary facilities for exhaust of used air or supply of fresh air.

Fitting:

On rectangular ducts in plenum boxes, in suspended ceilings and in walls. Fitted in an additional acid resistant steel fitting frame.

Construction:

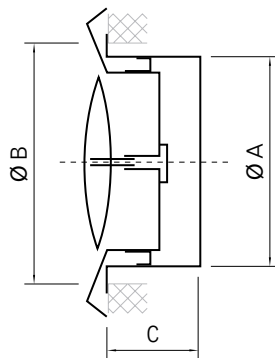
Front frame and the disc baffle made of pressed acid resistant steel sheet elements. Front frame is foam insulated to provide air tight fitting after mounting it with a fitting flange KKK.

Material:

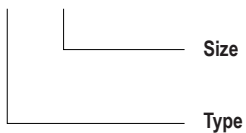
Acid resistant steel sheet.

Air flow regulation:

By the means of turning the disc baffle which has a regulating screw welded to the valve. Air flow regulation carried out from the front side without the necessity of dismantling the valve.

Dimensions and type marking:**VS****Production range:**

Valve size [mm]	ØA [mm]	ØB [mm]	C [mm]
100	97	118	52
125	120	141	52
150	145	162	52

Product marking:**VS-100****Example of an order:**

VS-100

Supply/exhaust valve Ø100 with a fitting ring, colour – RAL 9010