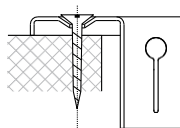


Supporting elements – general rules*

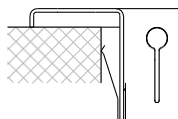
Type of assembly

Standard

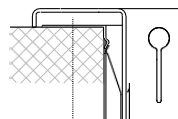
Visible screws $\varnothing 4$



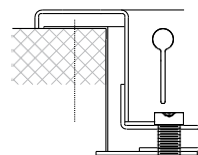
B1 – with additional springs. We do not recommend to use in ceiling.



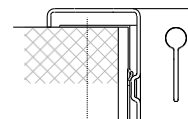
B2 – with additional springs and frame. We do not recommend to use in ceiling.



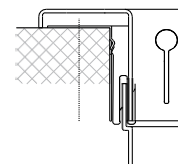
B3 – with additional frame with lock. It is ceiling system.



B4 – with additional frame. We do not recommend to use in ceiling.



B5 – with additional frame for grilles with dampers



1. Steel ventilation grilles

TYP A



Dimension of mounting hole L lub H [mm]	
L lub H < 525	Without any elements
525 < L lub H < 750	One support element TYPE A
750 < L lub H < 1025	One support element TYPE B
L lub H > 1025	One central support element TYP B and two support elements TYPE A on the sides of grille

TYP B



2. Aluminum ventilation grilles

TYP C



Dimension of mounting hole L lub H [mm]	
L lub H < 550	Without any elements
550 < L lub H < 750	One support element TYPE C
L lub H > 750	Two support elements TYPE C

*) Individually choice.